



## Designed for Complete Independent Living



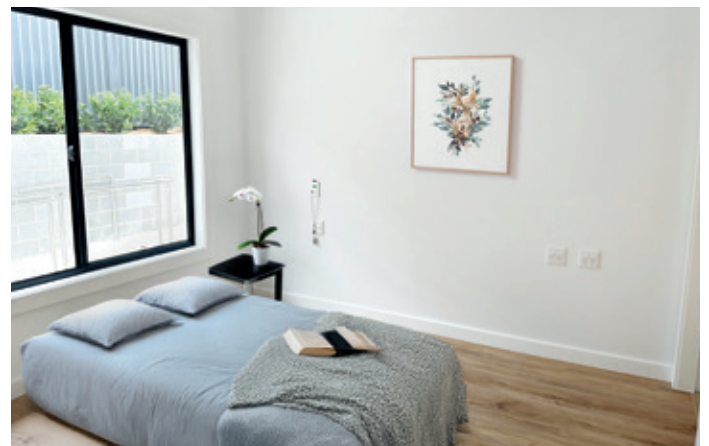
### OUR HOUSE

One bedroom robust villa in peaceful location in Jannali

This modern and accessible home in Jannali is a safe, comfortable and supportive environment for a tenant with SDA Robust funding from the NDIS.

Packed with functioning features like assistive technology, ducted air conditioning and automated blinds this open plan property also includes ramp access, a private ensuite, outdoor patio and garden. The home features reinforced walls and doors, smart security, and emergency backup systems for added safety. Soft-impact flooring, sensory soundproofing, and a calming colour scheme complement these safety features.

Located just 700m from Jannali Train Station, local shops, medical services and parks, St George, Sutherland and Kareena Private Hospitals are only a 15-20 minute drive away.





## THIS HOME WILL SUIT

This one-bedroom SDA villa is designed specifically for robust participants. Every detail has been carefully customised to create a secure, comfortable and functional home.

## SUPPORT AVAILABLE

- This house provides 24/7 support, including active night support.
- Staff supporting individuals within this service have skills and competencies in Autism, Positive Behaviour Support, Epilepsy Management, Sensory Management, Mental Health, Augmentative and Alternative Communication (AAC) and PCAS.
- Access to a fully maintained modified vehicle, for transport within a 30km radius of the house. Annual fee applies.

## LOCAL AREA

Jannali is a peaceful, convenient suburb in Sutherland Shire, surrounded by residential streets and bushland reserves. It has local shopping, dining, medical services, parks and essential amenities within easy reach.

